

INSTALLATION INSTRUCTIONS



No. 940207



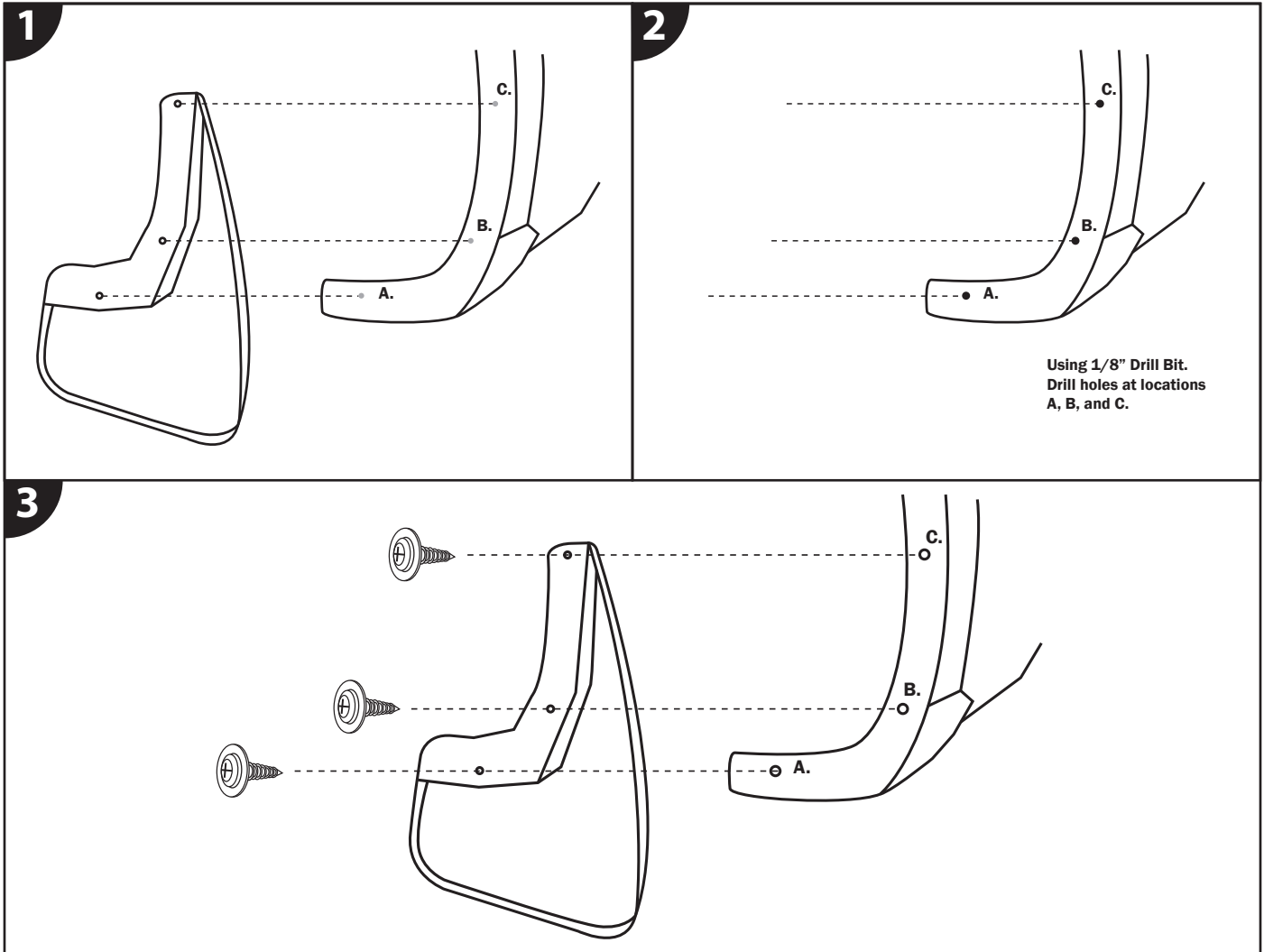
CUSTOM MOLDED REAR MUD GUARDS FOR GMC SIERRA

Tools Needed

- Phillips head screwdriver
- Drill with 1/8" drill bit

Included in Box

- Rear Mud Guards (for driver & passenger side)
- #10 Screws (x6)
- #10 Washers (x6)



Repeat Steps 1-3 for Driver & Passenger Side

STEP 1. Use the mud guard as a template to mark holes at location A, B, and C.

STEP 2. Drill a 1/8" hole into fender at locations A, B, and C.

STEP 3. Attach mud guard to fender with #10 Screws and Washers at newly-drilled hole locations A, B and C.