



CUSTOM MOLDED REAR MUD GUARD FOR SILVERADO INSTALLATION INSTRUCTIONS

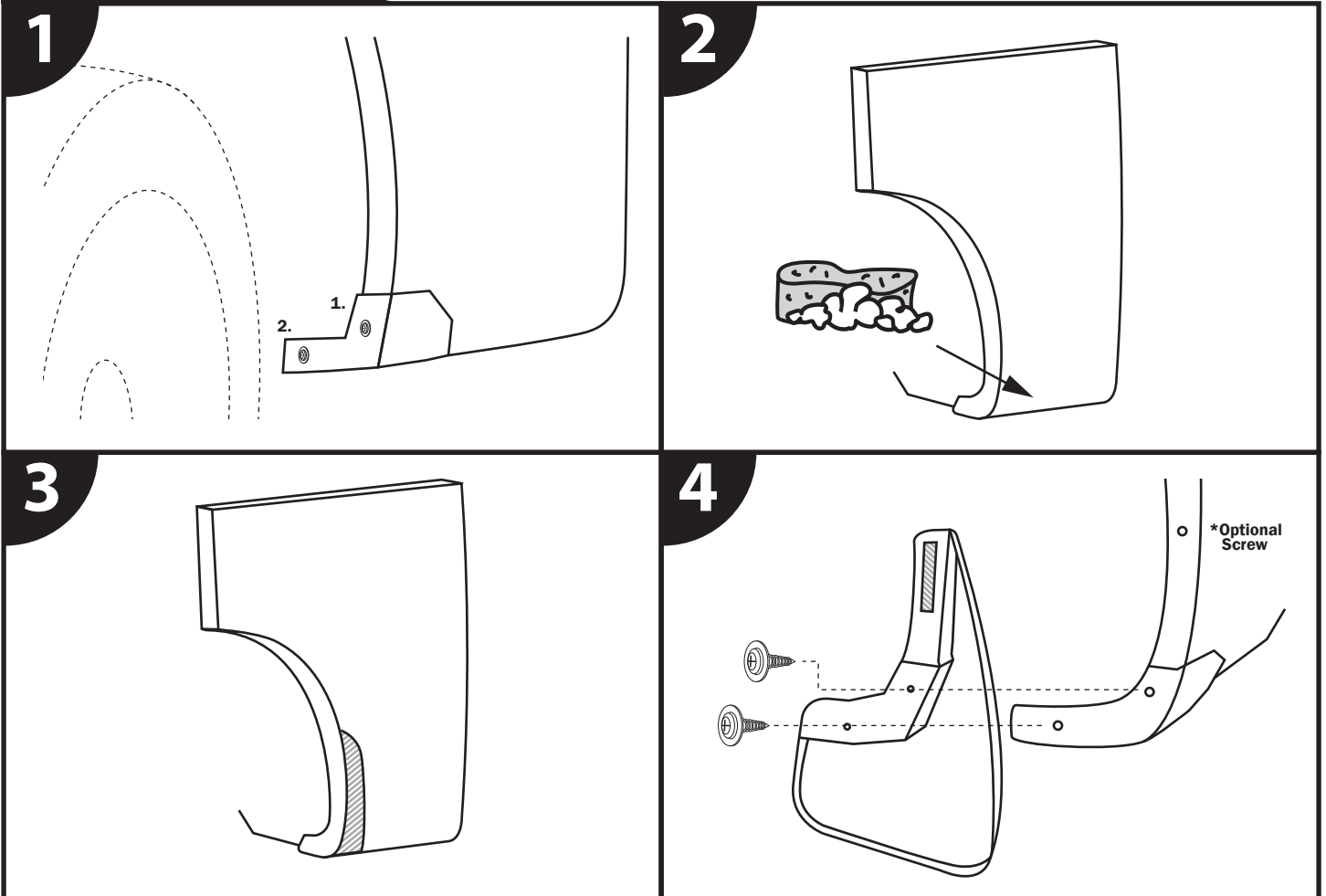
Tools Required

- T-15 Torx Head Bit / Driver
- Short Phillips screwdriver or drill attachment
- 1/8" Drill bit and Driver (Optional Install)

Package Contents

- Driver & passenger side rear mud guard
- #10 SEM Screws (Optional Install)
- Film to protect vehicle finish

INSTALLATION STEPS



Repeat Steps 1-4 for Driver & Passenger Side

STEP 1. Remove the two existing screws from inside the fender well with T-15 torx bit.

STEP 2. Thoroughly clean the area on the fender where the protection film will be placed.

STEP 3. Remove backing from the film to protect vehicle. Use a soapy water mixture to thoroughly wet the film to protect vehicle and wet the fender, apply film as shown. Apply pressure and smooth out film with a squeegee or sponge and allow to dry.

STEP 4. Peel the backing off the double sided tape and press the top of the guard against a clean fender. Align Red Hound Auto™ mud guard inside of the fender, screw in place with existing screws and secure adhesive tape strip.

RECOMMENDED: For a more secure installation, drill a hole in the fender and use the included screw to attach. First, align the mud guard on the fender and mark the proper place to drill. Drill a hole using a 1/8" bit. Install mud guard and screw.